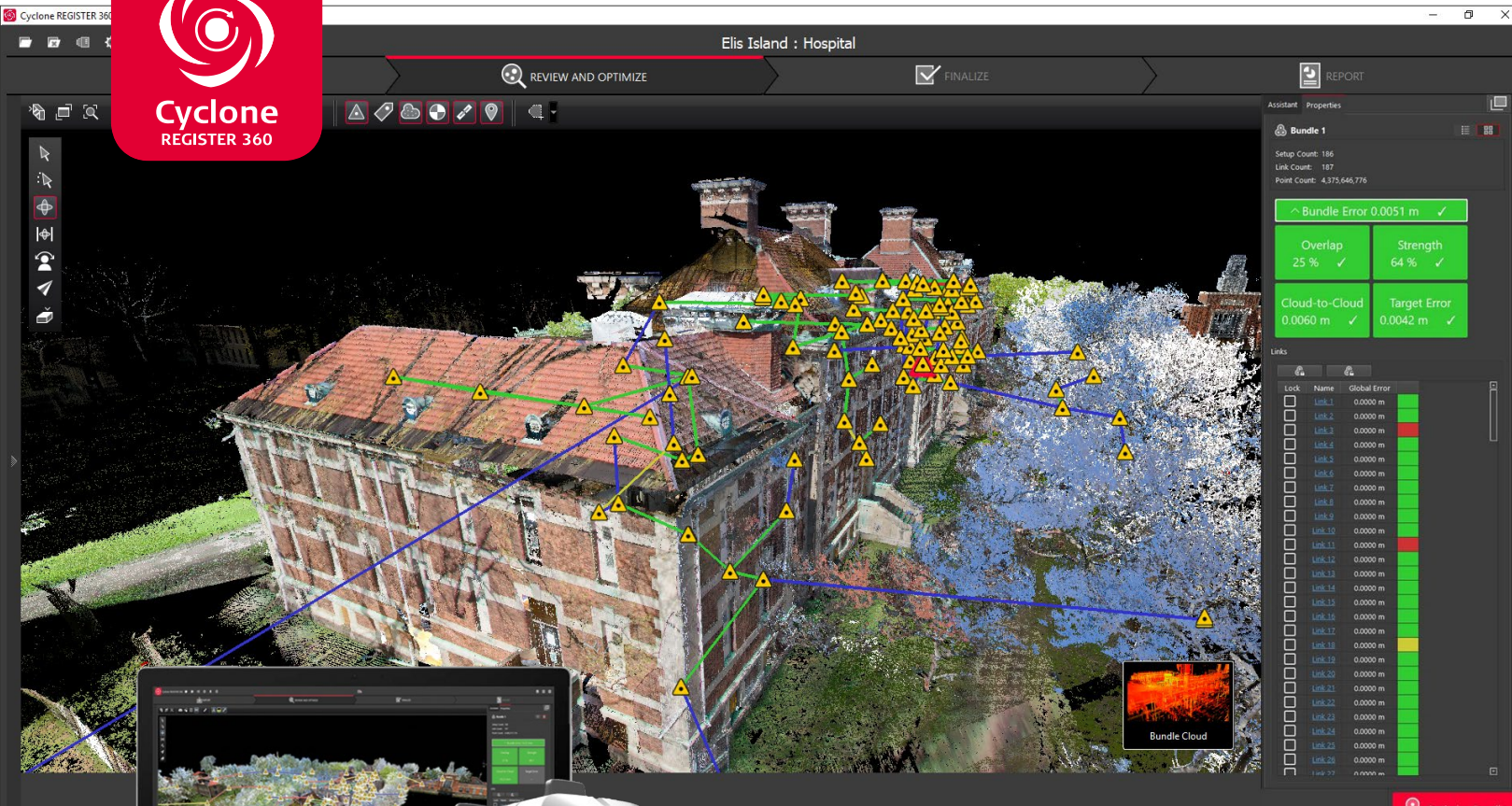


Leica Cyclone REGISTER 360

The power of Cyclone,
simplified



Leica Cyclone REGISTER 360 borrows from the simplicity of the Leica BLK360 while mimicking the agility of the RTC360 and the scalability of the ScanStation P-Series laser scanners to deliver a simple yet robust point cloud registration solution.

FOR NOVICE AND EXPERT ALIKE

Cyclone REGISTER 360 empowers users of any skill-level to work smarter, deliver results more accurately, visualize in more detail and collaborate more effectively - placing the user at the center of their projects.

Whether deployed as a stand-alone solution or as part of an end-to-end integrated laser scanning solution, Cyclone REGISTER 360 is your fastest and easiest option to get the job done right, the first time. It is available for all Cyclone REGISTER customers with active maintenance, or as a stand alone product.

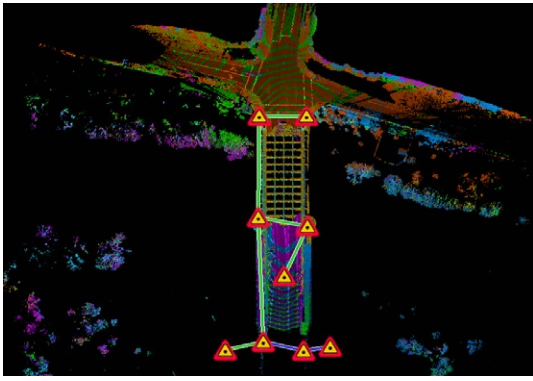
leica-geosystems.com



- when it has to be **right**

Leica
Geosystems





Professional Registration Reports includes user-defined content such as TruSlicer images, snapshots, error statistics and more.

Speed

- Drag-Drop-Done: load and process scans from most terrestrial sensors in one simple step, delivering higher productivity.
- Automatic registration delivers a complete registration for most projects. Users can fine-tune their results per project needs.
- SmartAlign tool at import improves auto-alignment speed.
- Leverage VIS links produced within Cyclone FIELD 360 to pre-align RTC360 data prior to import and optimization.
- TruSlicer tool speeds the process of best-practice validation through visual checks along X, Y and Z axes.

Scale

- Easily manage projects ranging from a handful to hundreds of scans with ease.
- Batch export and publish your data directly as a client-ready registration report, or TruView* data for local, network or web consumption. Even publish to JetStream*, and/or as an E57, PTX, PTG, PTS and the universal Leica Geosystems digital reality file (LGS)* with the click of a button for easy sharing in-office and beyond.

Simplicity

- Easy-to-understand reporting includes all the information you and your customers need to make decisions.
- Guided workflows to assist new users and streamlined-yet-powerful interface.
- Quality control built into the heart of the product – deliver professional results without the need for professional training.
- Visualize the strength and quality of your registration to minimize errors and improve accuracy.
- Version Manager to track your registration edits.

ULTIMATE SPEED

From project creation to final reporting, many projects take just minutes thanks to multi-threaded batch routines and automated registration.

PROFESSIONAL GRADE SCALE

Cyclone REGISTER 360 handles even the most complex of projects with ease and takes the headache out of large project registration.

SIMPLE, ONE-STEP IMPORT AND PROCESSING

Cyclone REGISTER 360 introduces the first drag-and-drop data import process which accepts data from most terrestrial sensors. Cyclone REGISTER 360 is also compatible with the BLK360 Data Manager, BLK360 WiFi import and Cyclone FIELD 360 projects from the RTC360.

PROFESSIONAL REGISTRATION REPORTING

Deliver professional-level deliverables with ease. Cyclone REGISTER 360 delivers a detailed registration report with SiteMaps, TruSlices, quality matrix, absolute mean error for each bundle and link, and a robust selection of graphics dictated by you in a thoughtfully-designed package.

POWERFUL QA/QC

Improved Visual Alignment tool, TruSlicer mode and link inspection tools give you total control over your project in a highly visual way. Paired with detailed link quality matrixes and easy methods to optimize your alignments, you can ensure you are delivering statistically accurate results validated by you.

FULLY LEVERAGE SCAN DATA

Cyclone REGISTER 360 makes full use of all data captured by your BLK360, RTC360 and P-Series scanners including pre-alignments, internal images, infrared and control data.

* With the appropriate Cyclone PUBLISHER License

Copyright Leica Geosystems AG, 9435 Heerbrugg, Switzerland. All rights reserved. Printed in Switzerland – 2017. Leica Geosystems AG is part of Hexagon AB. 865476enus - 08.18



Leica Cyclone FIELD 360 Flyer



Leica TruView Cloud Flyer



Leica CloudWorx Ultimate Data Sheet