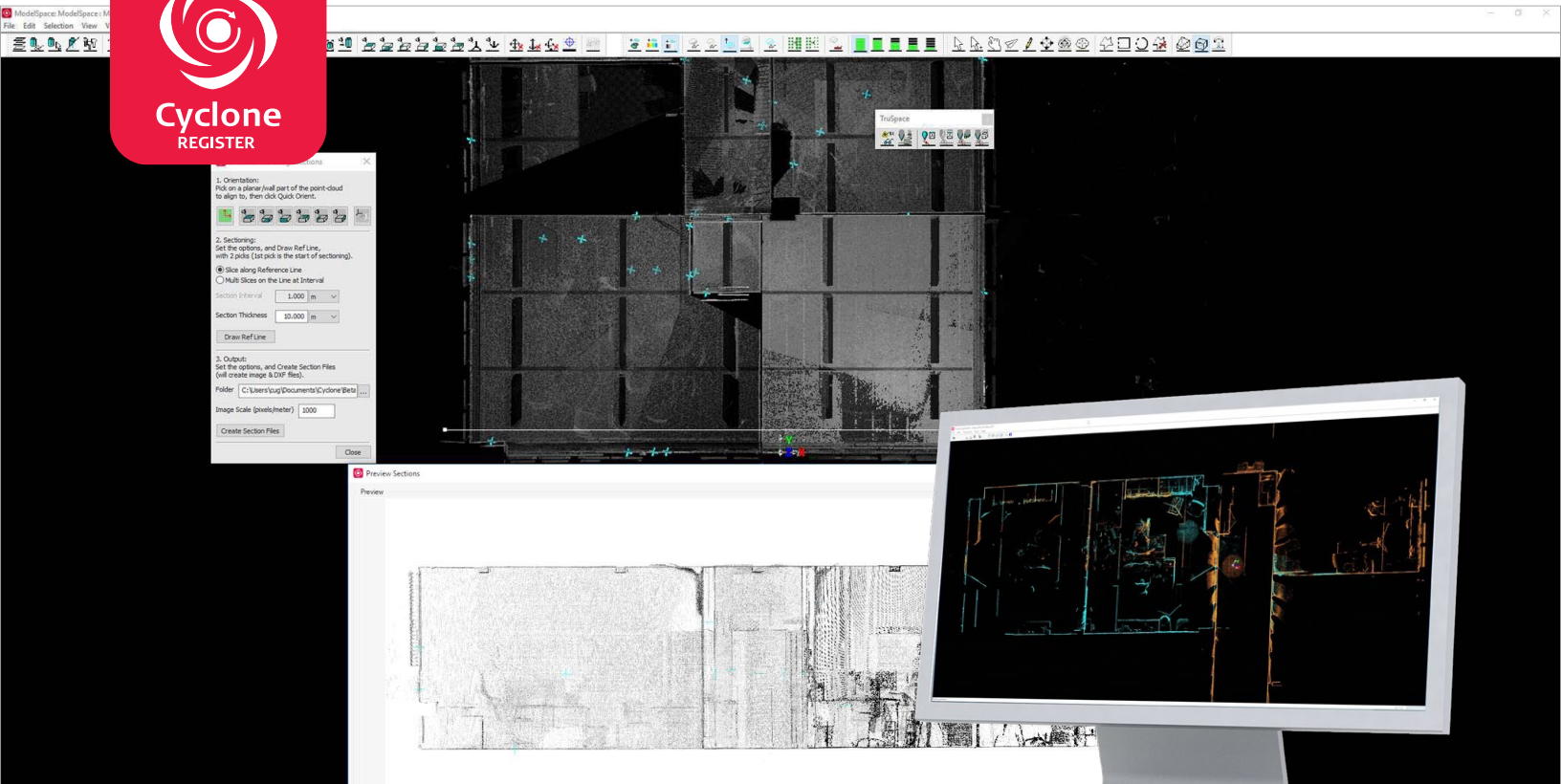


# Leica Cyclone REGISTER

## The gold-standard for point cloud registration



### Speed

Available automation features, friendly wizards and powerful algorithms provide unsurpassed office productivity - even for very large data sets. Auto alignment allows for fast alignment of scans at import or post import without manual intervention. Users can also take advantage of registration options based on scan targets, scene features, overlapping points, survey data or VIS links and Cyclone FIELD 360 pre-alignments (when using an RTC360) to speed the registration process.



### Scale

Cyclone REGISTER is the industry's best and most reliable solution to register large data sets. Whether you are working with a handful of scans or many thousand, Cyclone REGISTER is equipped to handle the task. Cyclone REGISTER accepts data from all your point cloud and imaging sensors with ease and lets you work with all your data simultaneously.



### Simplicity

Cyclone REGISTER brings unparalleled simplicity to complex point cloud registrations. During or even post-import, users can improve their auto-alignment speeds and accuracies via SmartAlign by manually placing scans in their approximate positions or automatically connecting them by time captured or distance between scans. For users who prefer a graphical display of their data during registration, Visual Alignment allows them to position scans based on common geometry via an easily legible high-contrast visualized point cloud.

[leica-geosystems.com](http://leica-geosystems.com)

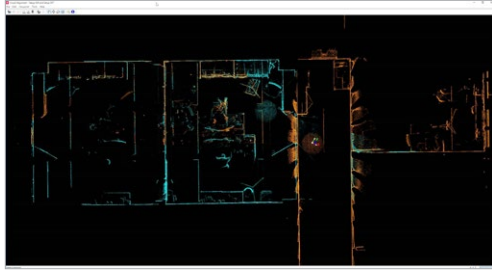


- when it has to be **right**

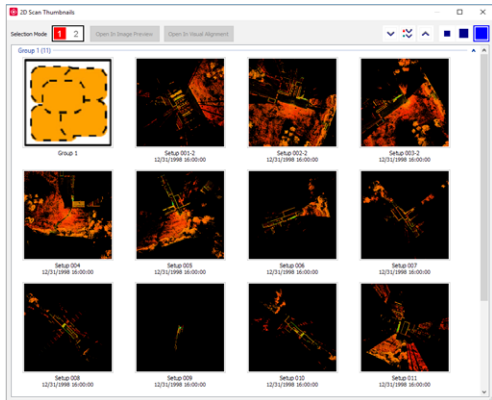
**Leica**  
Geosystems

PART OF  
**HEXAGON**

# Leica Cyclone REGISTER



Enhanced Visual Alignment provides an automatic ortho-rectified alignment in plan view.



A scan thumbnail window provides the user with a clear view of all scans within a project. Scans can be viewed and aligned visually right after import.

<b>Auto Alignment</b>	Automatically creates cloud-to-cloud alignments and automatically creates and opens a registration workflow window. Cyclone REGISTER leverages the Leica RTC360's VIS Technology to pre-align scans prior to import.
<b>SmartAlign</b>	Place scan positions on your sitemap (whatever it is, satellite image, hand sketch, etc.) to enhance productivity and accuracy of Auto-Align results.
<b>Visual Alignment</b>	Improved Visual Alignment automatically rotates setups to best fit based on geometry.
<b>Target management</b>	Target-based registration; geo-reference data to survey control data; highly optimized wizard-driven capability.
	Accurate results via bundle adjustment techniques.
	Extract spherical, planar and black/white targets. Automatic overlap and target finding wizards. Optimized target acquisition and registration workflows.
<b>Constraint management</b>	Cyclone Object Database Technology provides fast, simple, scalable point cloud data management.
	Create cloud constraints from complete or partial point clouds.
<b>Traverse management</b>	Office-side traverse management.
	Add, remove, edit targets, re-run traverse etc.
<b>Registration Diagnostics</b>	Overall accuracy reports.
	Individual target constraint error reporting.
	Cloud constraint Root Mean Square (RMS) error and error histogram.
<b>Import</b>	Point cloud data formats: XYZ, PTS, PTX, LAS, E57, ZFS, DP, FLS, SLW, IXF, LGS (Leica Geosystems universal digital reality file).
	Project data from Leica ScanStations, Pegasus systems, BLK360 and RTC360 imaging scanners. Cyclone REGISTER is compatible with the BLK360 Data Manager as well as BLK360 WiFi import.
	Direct Import of Cyclone REGISTER 360 and Cyclone FIELD 360 projects* to improve success with difficult registrations or to bring data into your Cyclone MODEL, SURVEY and other downstream workflows.
	Image/Camera and model data: COE, BMP, TIFF, JPEG, PNG, NCTRI, SPH
	Control data from ASCII & X-Function DBX
<b>Export</b>	Point cloud data formats: XYZ, PTS, PTX, E57, DXF, PCI/CWF, DBX
	Image and model data: COE, BMP, TIFF, JPEG, PNG
	LGS (universal Leica Geosystems digital reality file) for use in TruView, JetStream and CloudWorx products*** Publish directly to a JetStream server, and/or TruView Enterprise and TruView Cloud***.

## SYSTEM REQUIREMENTS

<b>Operating system</b>	Windows® 7 (32 or 64 bit), Windows®** 8 & 8.1 (64 bit only), Windows® 10 (64 bit only)	
<b>HARDWARE</b>	<b>MINIMUM</b>	<b>RECOMMENDED</b>
<b>Processor</b>	2.0 GHz Dual Core processor or better	3.0 GHz Quad Core w/ Hyper-threading or higher
<b>RAM</b>	2 GB (4 GB for Windows 7)	32 GB's or more 64 bit OS
<b>Hard disk</b>	40 GB	500 GB SSD Drive
<b>Large project disk option</b>		RAID 5, 6, or 10 w/ SATA or SAS
<b>Display</b>	SVGA or OpenGL accelerated graphics card (with latest drivers)	Nvidia GeForce GTX 680, Quadro K4000 or ATI Radeon 7850 or better, with 2 GB's memory or more
<b>File system</b>	NTFS	NTFS

\*See Leica Cyclone REGISTER 360 data sheet and flyer for more information on the product and interoperability with Cyclone REGISTER.

\*\*Reference the Leica Cyclone & CloudWorx Technical Specifications document for a complete listing of product specifications.

\*\*\* Requires the appropriate Cyclone PUBLISHER or TruView Cloud license.

Microsoft, Windows® and the Windows logo are either registered trademarks or trademarks of Microsoft Corporation in the United States and / or other countries.

Copyright Leica Geosystems AG, 9435 Heerbrugg, Switzerland. All rights reserved. Printed in Switzerland - 2017.

Leica Geosystems AG is part of Hexagon AB. 753496enus - 08.18

**Leica Geosystems AG**  
Heinrich-Wild-Strasse  
9435 Heerbrugg, Switzerland  
+41 71 727 31 31

- when it has to be **right**

